



Arbery Road, London, E3

BUTLER & STAG



Charming two bedroom split-level apartment set within a gorgeous school conversion on a tree-lined road in Bow.



- Two Bedroom Split-Level Apartment
- Mezzanine Kitchen/Dining Space
- Close to Mile End Station
- Part Furnished
- School Conversion
- Beautiful Bathroom
- Moments from Roman Road and Victoria Park
- Available from 28th February 2026

Featuring a wealth of character throughout, this wonderful property would make an ideal next home for a professional couple seeking a guest room or work-from-home space.

Arranged over two floors, the lower level comprises of a bright and cosy living space with a feature fireplace, a double bedroom with fitted wardrobes and a beautifully-appointed bathroom.

The upper level features a mezzanine kitchen/dining area, a snug space overlooking the reception and a further double bedroom.

Set off an attractive road in residential Bow, yet just moments from the amenities of the iconic Roman Road, the location provides swift access towards Mile End station in one direction and the ever-popular Victoria Park and village in the other. The nearby Regent's Canal offers idyllic cycles and waterside walks.

Offered part furnished, this must-see apartment is available from 28th February 2026.

EPC Rating C
Council Tax Band C

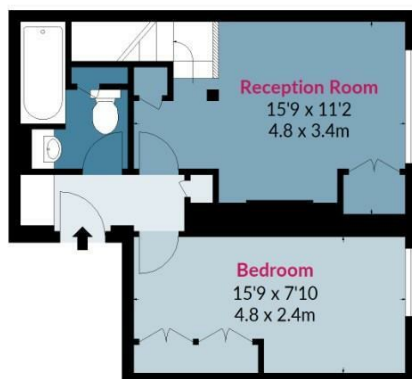




Schoolbell Mews, E3

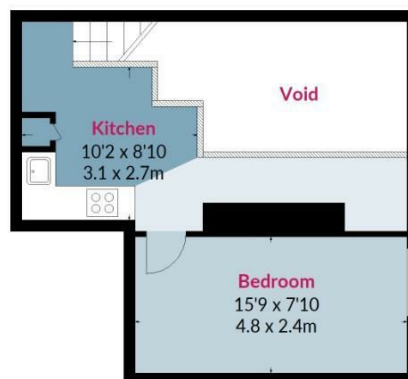
Approx. Gross Internal Area 683 Sq Ft - 63.45 Sq M

BUTLER & STAG



First Floor

Floor Area 399 Sq Ft - 37.07 Sq M



Second Floor

Floor Area 284 Sq Ft - 26.38 Sq M



Measured according to RICS IPMS2. Floor plan is for illustrative purposes only and is not to scale. Every attempt has been made to ensure the accuracy of the floor plan shown, however all measurements, fixtures, fittings and data shown are an approximate interpretation for illustrative purposes only. 1 sq m = 10.76 sq feet.

lpaplus.com

Date: 24/11/2022

IMPORTANT NOTICE - These particulars have been prepared in good faith and they are not intended to constitute part of an offer or contract. We have not performed a structural survey on this property and the services, appliances and specific fittings have not been tested. All photographs, measurements, floor plans and distances referred to are given as a guide and should not be relied upon.

BUTLER & STAG

☎ 020 8102 1236

🏠 508 Roman Road, Bow, London, E3 5LU

✉ bow@butlerandstag.com

www.butlerandstag.uk